

© **AERO-MATE**

Tank Recoil Esc
User's Manual
Catalogue

1. Tank Recoil Esc.....2

2. Connection.....6

3. How to use.....9

4. Special Features.....11

5. Product Show off.....12

Release 4 : 2013-12-6

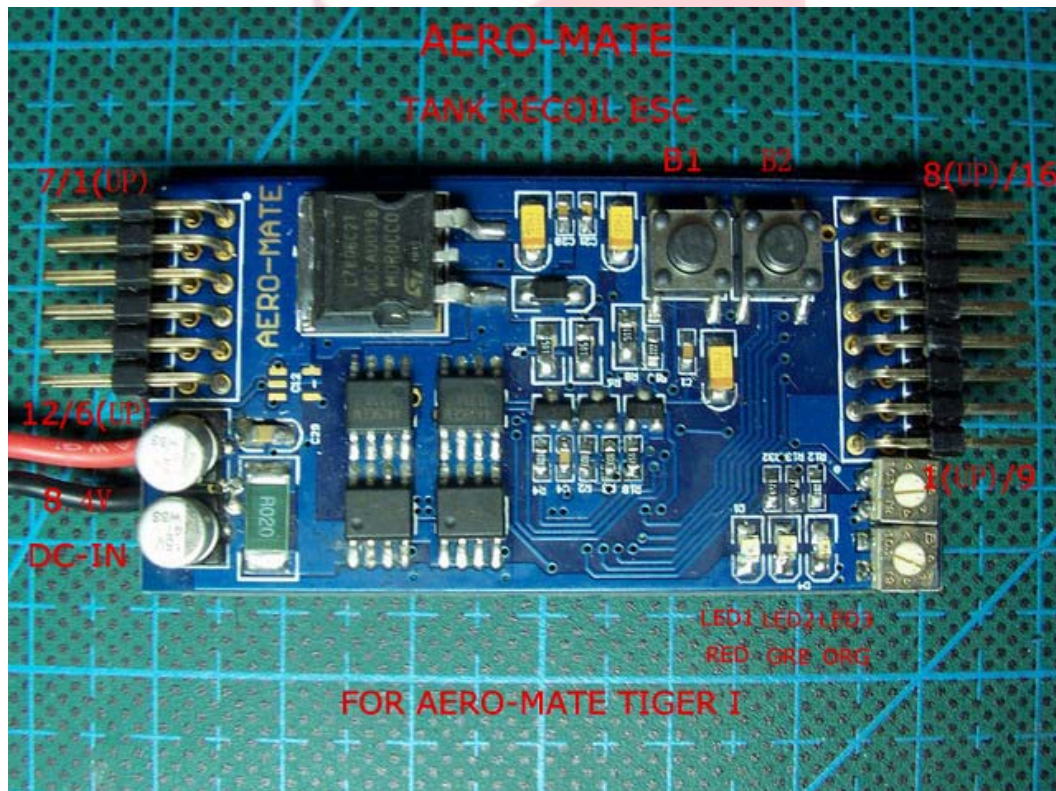


AERO-MATE TECHNOLOGY CO., LTD

TEL/FAX: 0755-28779460/28776560

www.aero-mate.com

1. Tank Recoil Esc Intro



1. 12Pin 7/1(UP) 88 Firing signal in

Using MFU L3 as signal to start a firing.

2. 12Pin 8/2(UP) Firing Interval Time

There are two Firing Interval Time, choosing by a jumper.
Description:

Short: 1S, default, with BAS

Open: 6s, when without BAS

Caution: Set jumper when power is off.



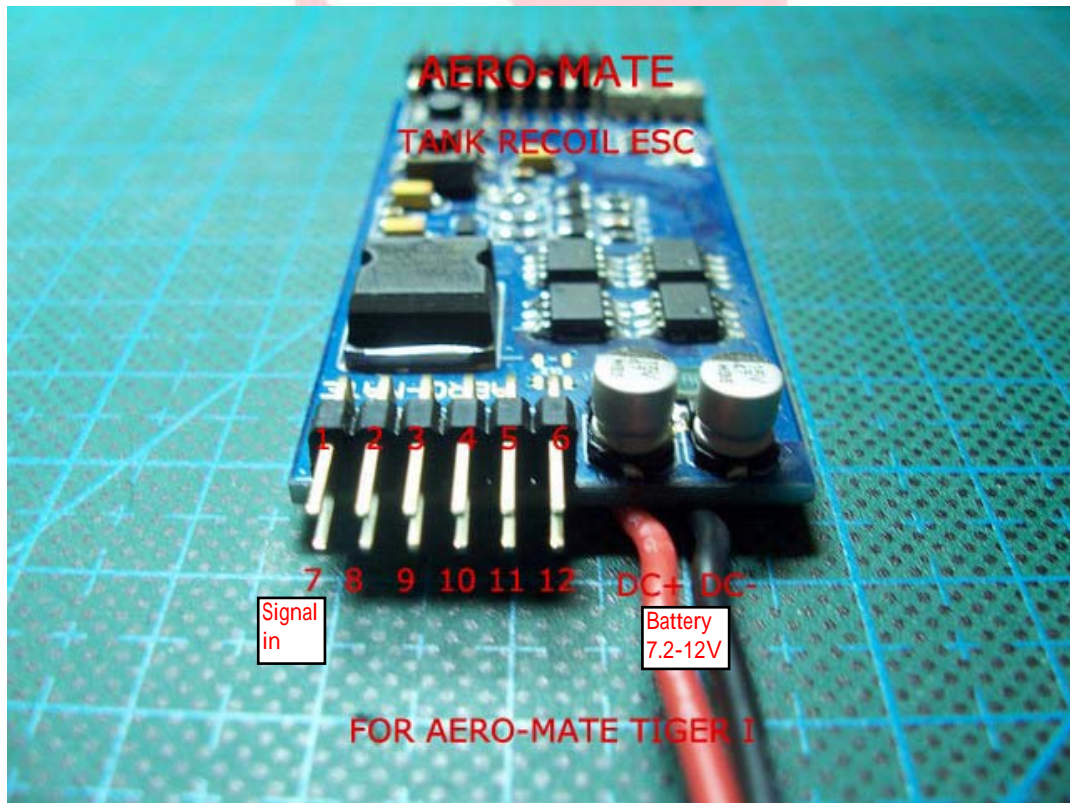
AERO-MATE TECHNOLOGY CO., LTD

TEL/FAX: 0755-28779460/28776560

www.aero-mate.com

3. 12Pin-12: Vcc

This can be used as power supply for other parts. 500ma Max.



12Pin: Others see connection table

4. 16Pin-8(UP)/16

Motor+/-
Connect to motor

5. 16Pin-7(UP)/15

Connect to recoil switch

6. 16Pin-5(UP)/13

Connect to 88 Gun Firing LED



AERO-MATE TECHNOLOGY CO., LTD

TEL/FAX: 0755-28779460/28776560

www.aero-mate.com

7. 16Pin-9 Vcc

This can be used as power supply for other parts. 500ma Max.

**8. LED: There are 3 LED in this ESC**

- 1.LED1-Power on LED: when esc is power on, LED1 is in 'RED'. That means it works.
2. LED2 LED3-Ammo indicating LED , **see below**
LED2 in 'GREEN'. LED3 in 'ORANGE'.

AERO-MATE**AERO-MATE TECHNOLOGY CO., LTD**

TEL/FAX: 0755-28779460/28776560

www.aero-mate.com

9.B1-Ammo Selection Button

You can press B1 to change the Ammo of Tiger I, see below

Ammo /LED	LED2 (GREEN)	LED3 (ORANGE)
Pzgr.39	on	on
Pzgr.40	OFF	on
Gr.39HL	on	OFF

10. B2-Test Firing Button

Press B2 to make a test firing of 88 gun.

11. 8.4V DC-IN

Connect to battery. 6 cells Ni-xx (NiMH or NiCd) 2 cells Li-Po.
(7.2-8.4V DC)

`+`-positive pole, red wire

`-`-negative pole, black wire



AERO-MATE TECHNOLOGY CO., LTD

TEL/FAX: 0755-28779460/28776560

www.aero-mate.com

2. Connections

AERO-MATE Tank Recoil Esc
CONNECTION TABLE

ESC	AERO-MATE Multifunction Unit			Connect To	MEM
	No	Name	Status		
12Pin	1 (UP) /7	Firing Signal in		MFU L3	2Pin Wire; 1-RED/7-BLK
	2 (UP) /8	1s/6s	SHORT/OPEN		Jumper
	3 (UP) /9	NC			
	4 (UP) /10	NC			
	5 (UP) /11	NC			
	6 (UP) /12	NC			
16Pin	8(UP)/16	Motor+/-		Recoil motor	4Pin Wire. 8- RED /16- BLK. 7- YLW/15- WHI
	7(UP)/15	switch		Recoil Switch	
	6(UP)/14	NC			
	5(UP)/13	Firing LED+/-		LED	2Pin Wire With LED. 5-RED/13-BLK
	4(UP)/12	NC			
	3(UP)/11	NC			
	2(UP)/10	NC			
	1(UP)/9	NC			
8.4V DC-IN	1(RED)	8.4V DC+		Battery +	
	2(BLK)	8.4V DC-		Battery -	

Color Description:

RED-red /BLK-black /YLW-yellow /WHI-white

Caution:

- 1、 It will damage the esc if 16Pin-8/16 is wrong connected to other terminals.
- 2、 Recoil Motor must be working well before connecting to the esc.

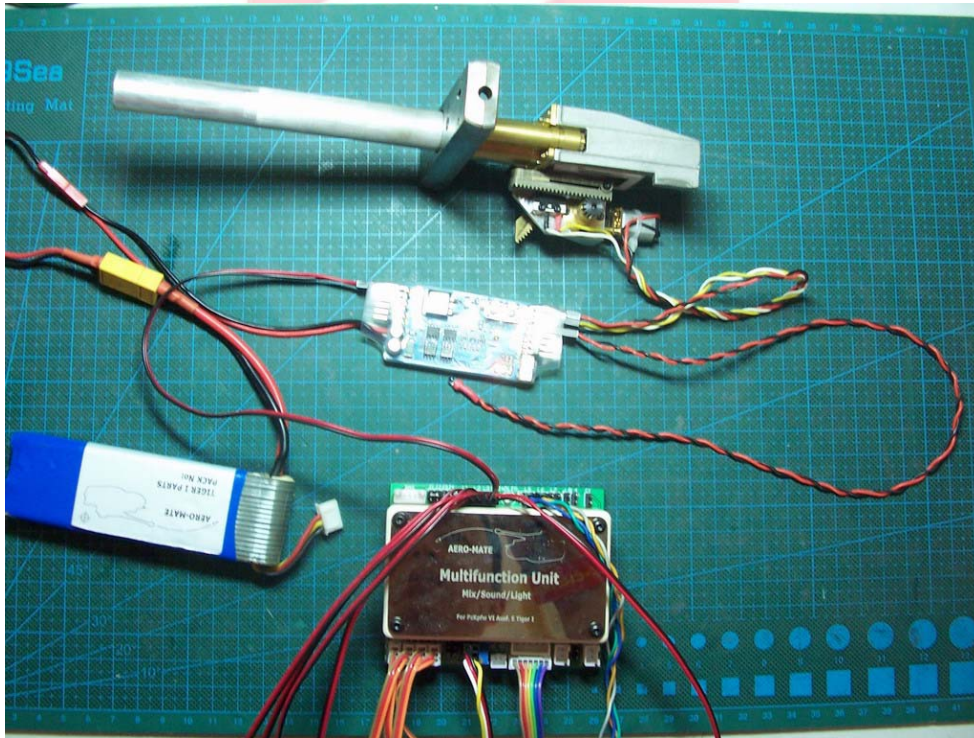


AERO-MATE TECHNOLOGY CO., LTD

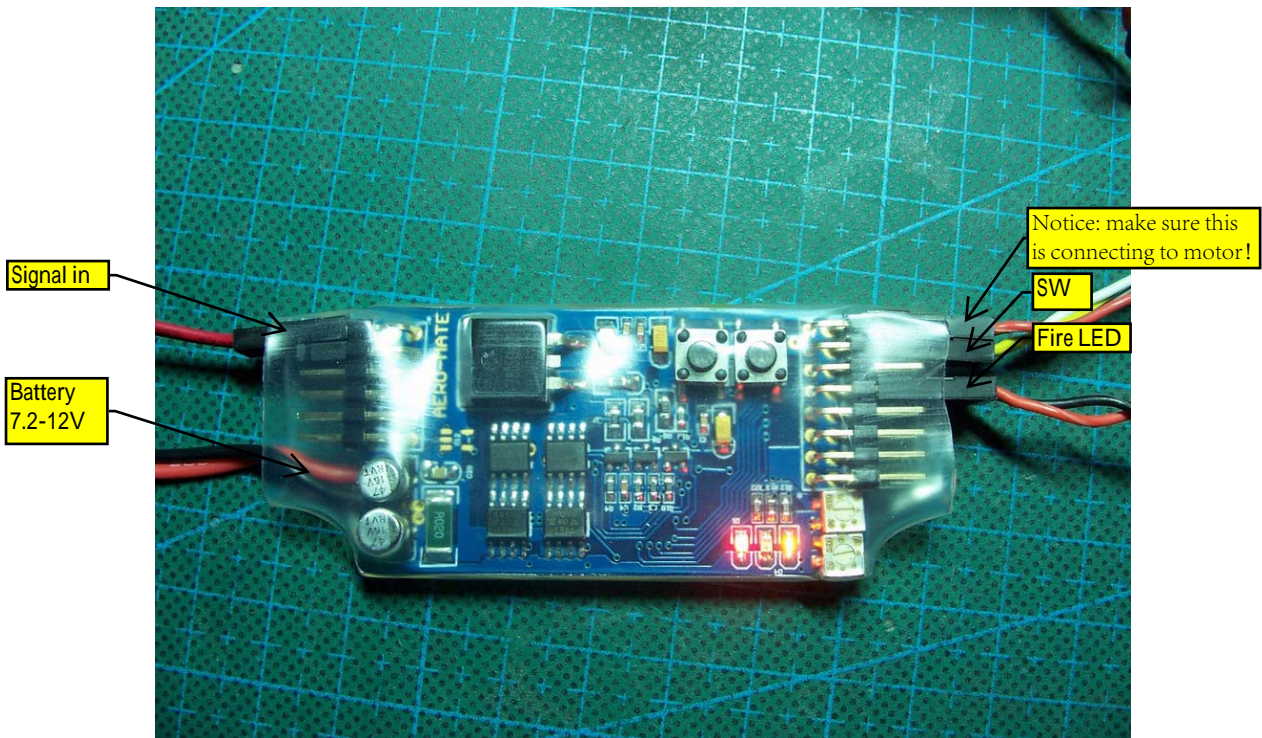
TEL/FAX: 0755-28779460/28776560

www.aero-mate.com

Reference of connections



All parts



Esc

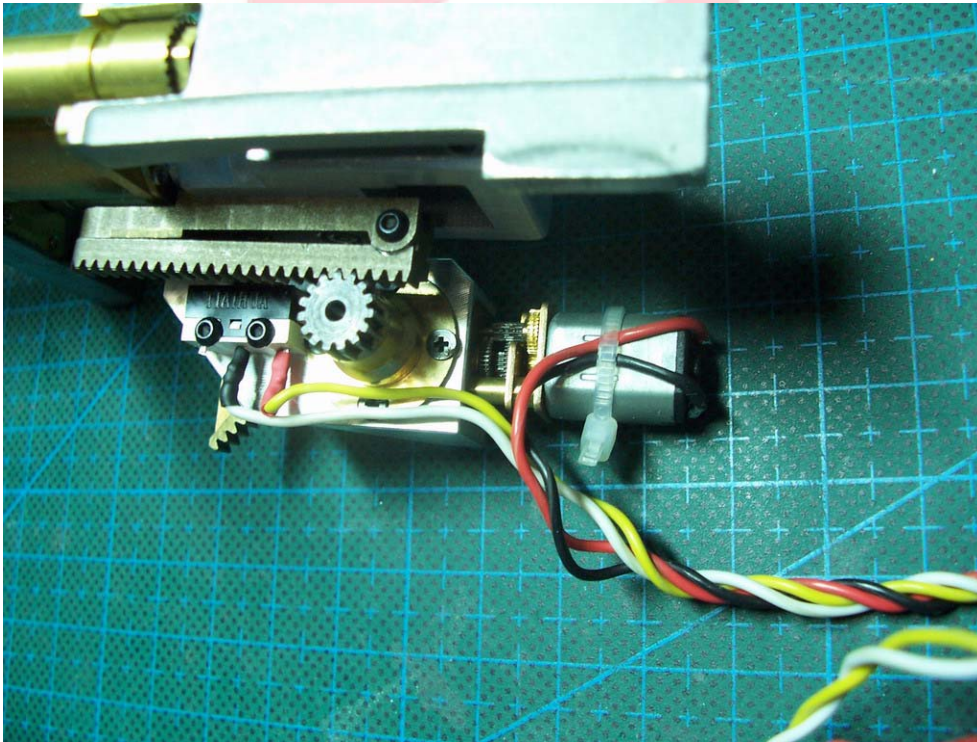
AERO-MATE



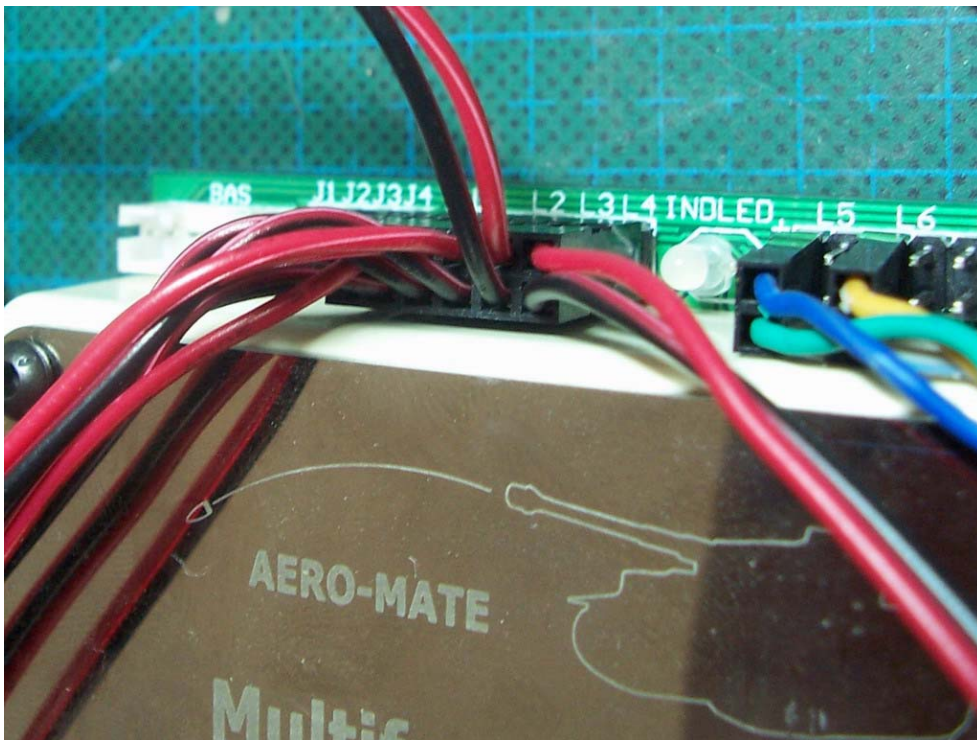
AERO-MATE TECHNOLOGY CO., LTD

TEL/FAX: 0755-28779460/28776560

www.aero-mate.com



88 Gun



MFU

AERO-MATE



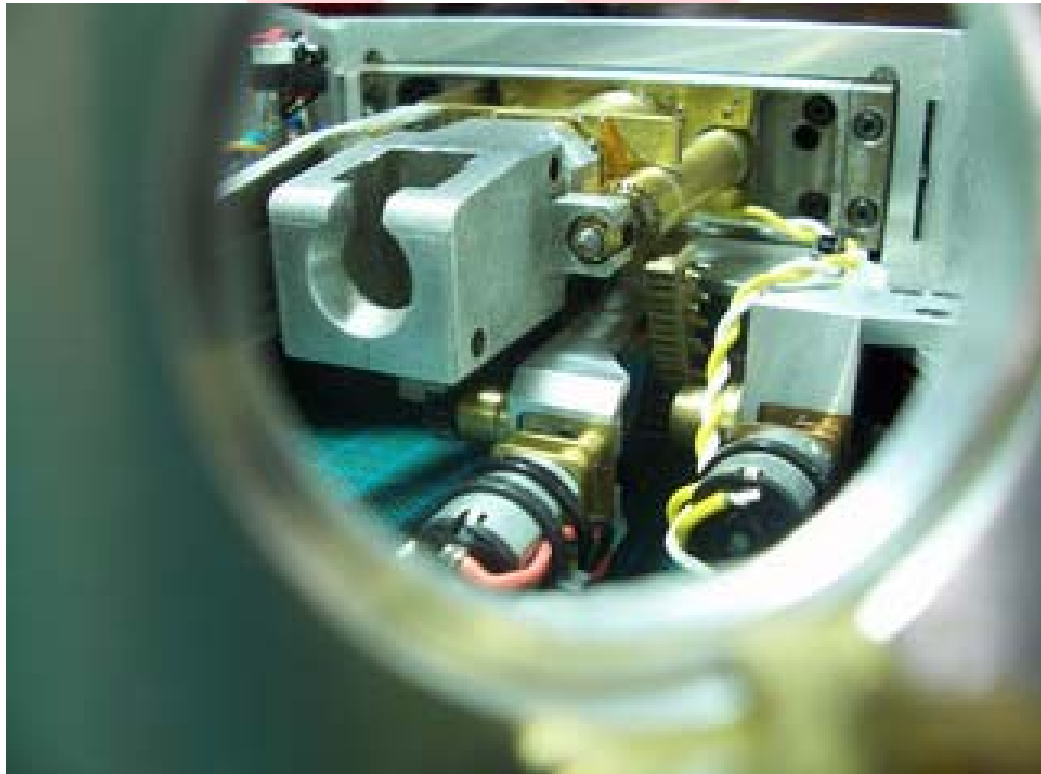
AERO-MATE TECHNOLOGY CO., LTD

TEL/FAX: 0755-28779460/28776560

www.aero-mate.com

3. HOW TO USE

After right connections, you can fire 88 Gun with AERO-MATE Recoil system now.



Your 88 Gun will make different recoil movement depending on what you choose the Ammo.

AERO-MATE



AERO-MATE TECHNOLOGY CO., LTD

TEL/FAX: 0755-28779460/28776560

www.aero-mate.com

3.1 Changing Ammo

You can change Ammo of 88 Gun by pressing B1.

Ammo /LED	LED2 (GREEN)	LED3 (ORANGE)
Pzgr.39	off	on
Pzgr.40	on	on
Gr.39HL	on	off

3.2 Test Firing

You can make a test firing of 88 Gun by pressing B2.

Notice: You should wait for certain time 1S/6S when changing Ammo or firing.

AERO-MATE



AERO-MATE TECHNOLOGY CO., LTD

TEL/FAX: 0755-28779460/28776560

www.aero-mate.com

4. Special Features

AERO-MATE Tank Recoil System has some special features

4.1 Automatic in-position

When esc is powered on, esc will check position of 88 Gun. If it is not in-position, esc will drive motor to finish the job. If it fails, esc will make a warning.

4.2 Mechanics Jam Protection

Whenever mechanics jam happens, esc will make a warning to prevent further mechanics damage.

4.3 Low battery warning

When battery is under 6V, esc will make a warning.

Warning Table

SN	88 Gun Firing LED	Possible Reason/Solution
1	Long Flashing	Recoil switch is open or mechanics jam when power is on.
2	Short Flashing	Recoil switch is open or mechanics jam when after a firing.
3	Two short Flashing	Low battery

Copyright © **AERO-MATE** 2012



AERO-MATE TECHNOLOGY CO., LTD

TEL/FAX: 0755-28779460/28776560

www.aero-mate.com

5 Product Show off



AERO-MATE Tiger I for George



AERO-MATE Full Metal Bagger-coming soon!

AERO-MATE



AERO-MATE TECHNOLOGY CO., LTD

TEL/FAX: 0755-28779460/28776560

www.aero-mate.com